

**Indirect-Fired
Heating & Ventilating**

Indoor & Outdoor Horizontal

*Heating Capacities from
75 to 1,200 MBH Input*

*Airflow Capacities from
600 to 14,800 CFM*



Pure and Simple Solutions



The **I-Series**



The I-Series

AbsolutAire® Indirect-Fired Heating & Ventilating

With unmatched excellence in direct-fired heating, ventilating and make-up air systems, AbsolutAire has expertise in indirect-fired systems as well. Indirect-fired technologies meet specific customer preferences and are common choices for many commercial, institutional and industrial applications in which the higher capacities, displacement ventilation and fuel efficiency of direct-fired systems are not required.

AbsolutAire I-Series indirect-fired heating and ventilating systems are available in horizontal models for either indoor or outdoor installation. Like most indirect-fired systems, these units are 80% energy efficient and use advanced heat exchangers in the furnace section to provide building supply air at set temperatures. Depending on the application, these systems may be gravity vented or power vented for exhausting combustion gases to the outdoors.

Many of the same design features found on AbsolutAire direct-fired units can be found on our indirect-fired units. These include motorized inlet dampers, easy-to-service filters, long-life motor and fan combinations, single-point gas and electrical connections, ETL/CSA certifications, advanced control systems and much more.

AbsolutAire I-Series indirect-fired heating and ventilating systems are available with heating capacities from 75 to 1,200 MBH input and airflow capacities from 600 to 14,800 CFM.

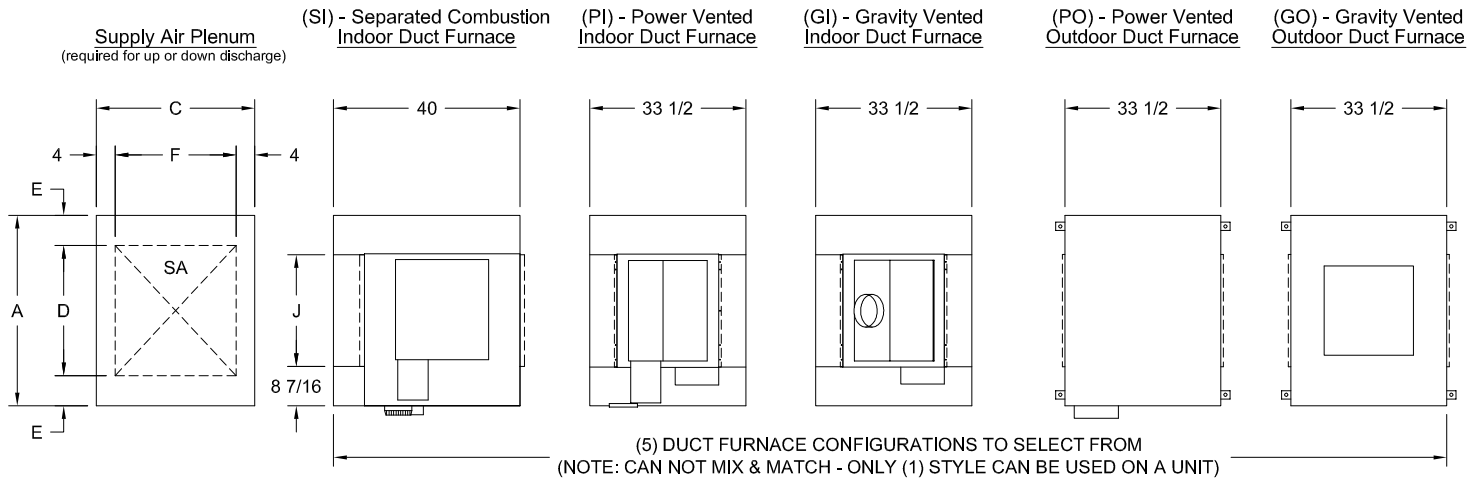


I-SERIES MODEL SIZING

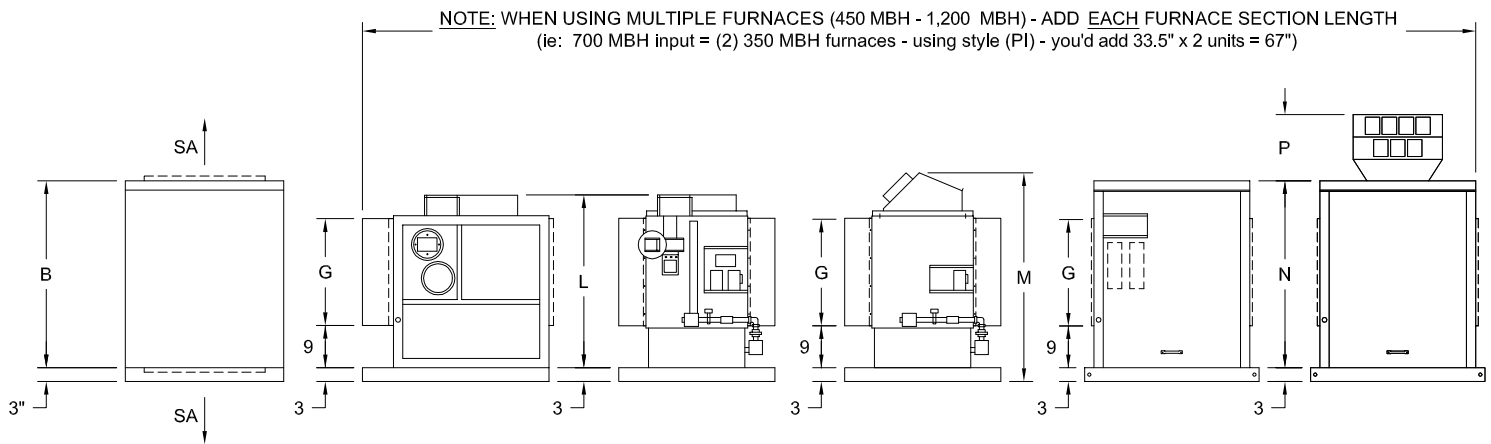
Blower/ Motor Cabinet	Blower/ Motor Cabinet	Furnace Size Used	Btu/Hr Input	Btu/Hr Output	Unit CFM @ Temperature Rise Through Unit (°F)									
					20	25	30	35	40	45	50	55	60	
I1	1	075	75,000	60,000	2,778	2,222	1,852	1,587	1,389	1,235	1,111	1,010	926	
I2	1	100	100,000	80,000	3,704	2,963	2,469	2,116	1,852	1,646	1,481	1,347	1,235	
	1	125	125,000	100,000	4,630	3,704	3,086	2,646	2,315	2,058	1,852	1,684	1,543	
I3	1	150	150,000	120,000	5,556	4,444	3,704	3,175	2,778	2,469	2,222	2,020	1,852	
	1	175	175,000	140,000	6,481	5,185	4,321	3,704	3,241	2,881	2,593	2,357	2,160	
I4	1	200	200,000	160,000	7,407	5,926	4,938	4,233	3,704	3,292	2,963	2,694	2,469	
	1	225	225,000	180,000	8,333	6,667	5,556	4,762	4,167	3,704	3,333	3,030	2,778	
	2	225	450,000	360,000	N/A	N/A	N/A	N/A	8,333	7,407	6,667	6,061	5,556	
I5	1	250	250,000	200,000	9,259	7,407	6,173	5,291	4,630	4,115	3,704	3,367	3,086	
	1	300	300,000	240,000	11,111	8,889	7,407	6,349	5,556	4,938	4,444	4,040	3,704	
	2	250	500,000	400,000	N/A	N/A	N/A	N/A	9,259	8,230	7,407	6,734	6,173	
	2	300	600,000	480,000	N/A	N/A	N/A	N/A	11,111	9,877	8,889	8,081	7,407	
I6	1	350	350,000	280,000	12,963	10,370	8,642	7,407	6,481	5,761	5,185	4,714	4,321	
	1	400	400,000	320,000	14,815	11,852	9,877	8,466	7,407	6,584	5,926	5,387	4,938	
	2	350	700,000	560,000	N/A	N/A	N/A	N/A	12,963	11,523	10,370	9,428	8,642	
	2	400	800,000	640,000	N/A	N/A	N/A	N/A	14,815	13,169	11,852	10,774	9,877	

Blower/ Motor Cabinet	Blower/ Motor Cabinet	Furnace Size Used	Btu/Hr Input	Btu/Hr Output	Unit CFM @ Temperature Rise Through Unit (°F)									
					60	65	70	75	80	85	90	95	100	
I1	1	075	75,000	60,000	926	855	794	741	694	654	617	585	556	
I2	1	100	100,000	80,000	1,235	1,140	1,058	988	926	871	823	780	741	
	1	125	125,000	100,000	1,543	1,425	1,323	1,235	1,157	1,089	1,029	975	926	
I3	1	150	150,000	120,000	1,852	1,709	1,587	1,481	1,389	1,307	1,235	1,170	1,111	
	1	175	175,000	140,000	2,160	1,994	1,852	1,728	1,620	1,525	1,440	1,365	1,296	
I4	1	200	200,000	160,000	2,469	2,279	2,116	1,975	1,852	1,743	1,646	1,559	1,481	
	1	225	225,000	180,000	2,778	2,564	2,381	2,222	2,083	1,961	1,852	1,754	1,667	
	2	225	450,000	360,000	5,556	5,128	4,762	4,444	4,167	3,922	3,704	3,509	3,333	
I5	1	250	250,000	200,000	3,086	2,849	2,646	2,469	2,315	2,179	2,058	1,949	1,852	
	1	300	300,000	240,000	3,704	3,419	3,175	2,963	2,778	2,614	2,469	2,339	2,222	
	2	250	500,000	400,000	6,173	5,698	5,291	4,938	4,630	4,357	4,115	3,899	3,704	
	2	300	600,000	480,000	7,407	6,838	6,349	5,926	5,556	5,229	4,938	4,678	4,444	
	3	250	750,000	600,000	9,259	8,547	7,937	7,407	6,944	6,536	6,173	5,848	5,556	
	3	300	900,000	720,000	11,111	10,256	9,524	8,889	8,333	7,843	7,407	7,018	6,667	
I6	1	350	350,000	280,000	4,321	3,989	3,704	3,457	3,241	3,050	2,881	2,729	2,593	
	1	400	400,000	320,000	4,938	4,558	4,233	3,951	3,704	3,486	3,292	3,119	2,963	
	2	350	700,000	560,000	8,642	7,977	7,407	6,914	6,481	6,100	5,761	5,458	5,185	
	2	400	800,000	640,000	9,877	9,117	8,466	7,901	7,407	6,972	6,584	6,238	5,926	
	3	350	1,050,000	840,000	12,963	11,966	11,111	10,370	9,722	9,150	8,642	8,187	7,778	
	3	400	1,200,000	960,000	14,815	13,675	12,698	11,852	11,111	10,458	9,877	9,357	8,889	

I-SERIES DIMENSIONAL DATA



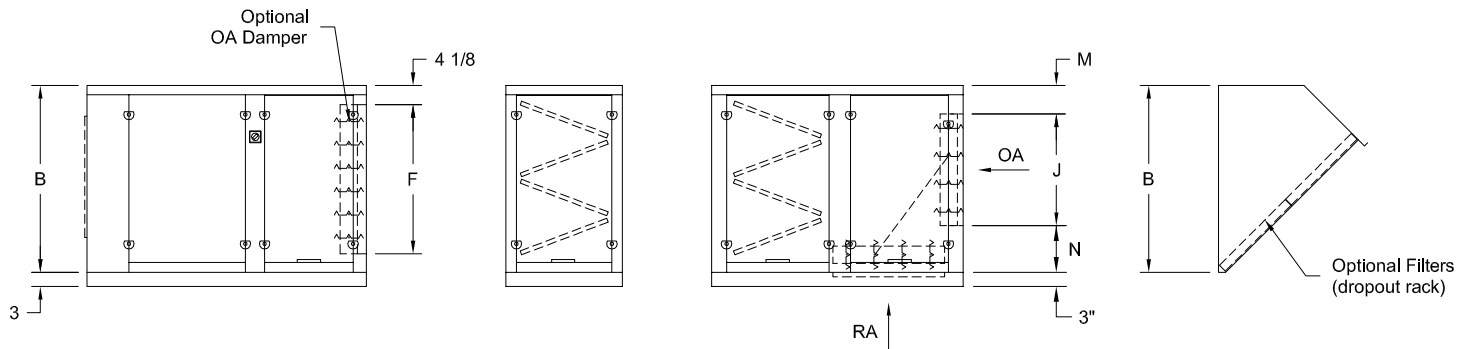
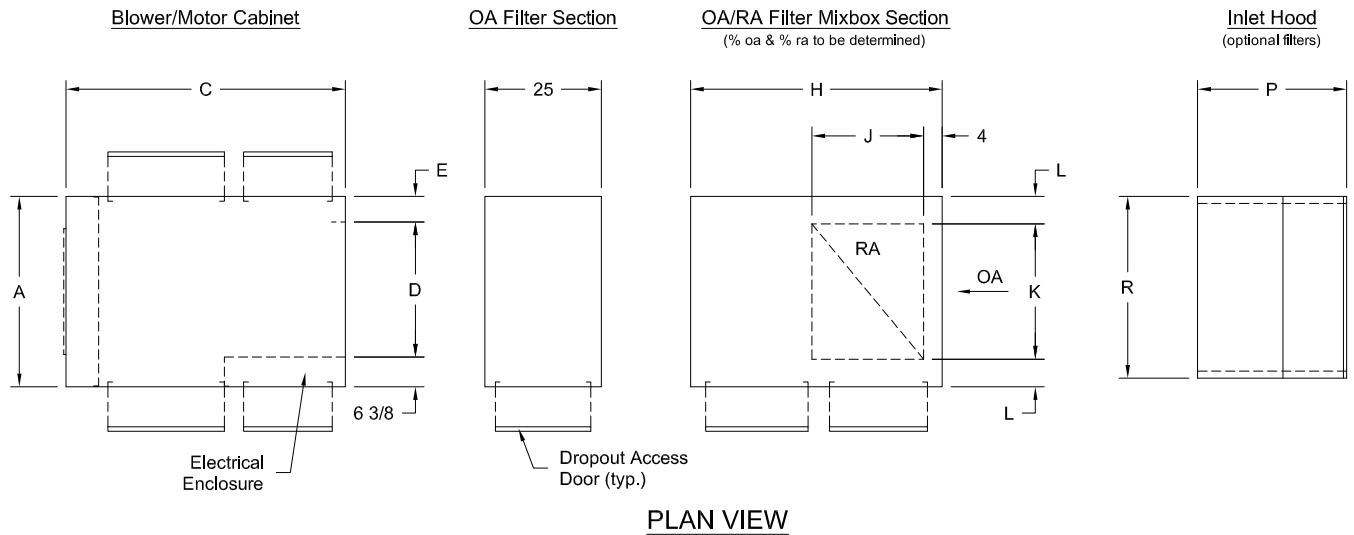
PLAN VIEW



CONTROLS SIDE VIEW

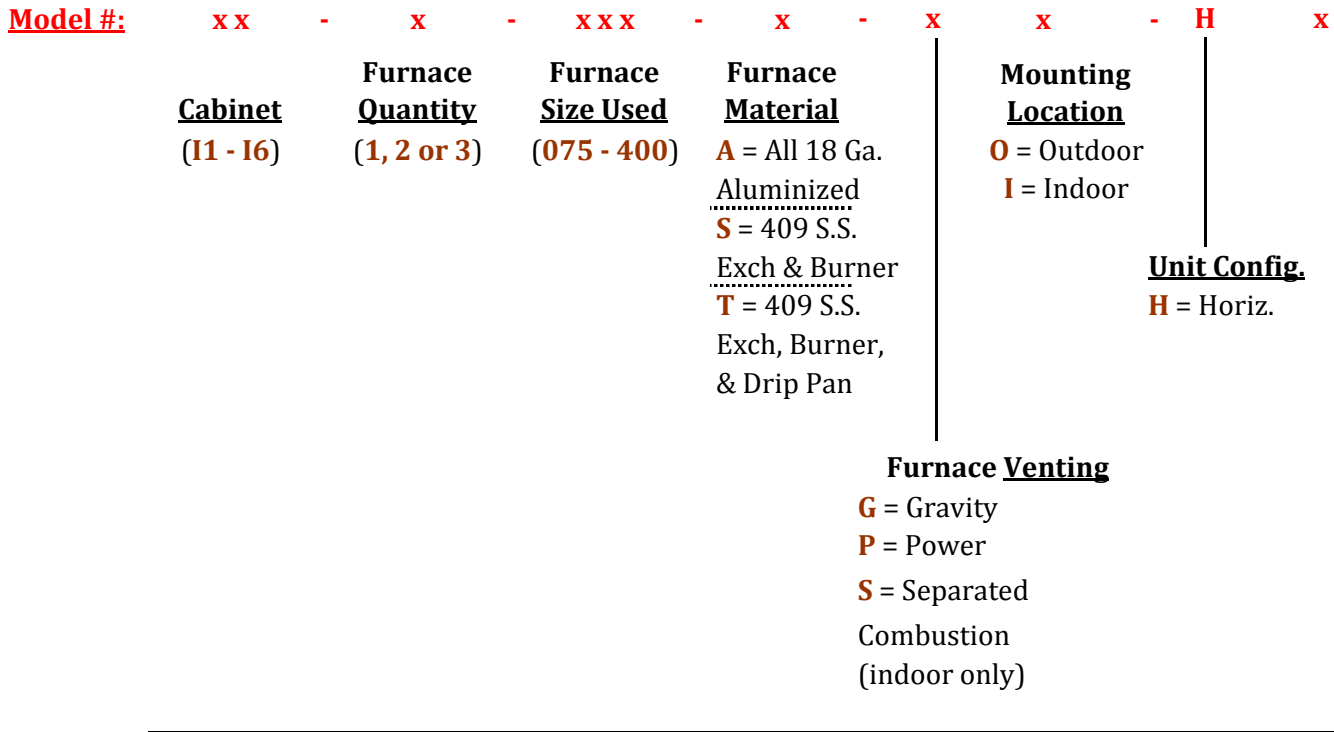
Blower & Motor Cabinet	Furnace		Gas Pipe Size	Dimensions, Inches											
	Qty	Size		A	B	C	D	E	F	G	J	L	M	N	P
I1	1	075	1/2"	32	36 1/8	28	20	6	20	19	15 1/4	33 1/16	37 3/4	36 1/8	14 1/4
	1	100		34 1/2	36 1/8	28	22	6 1/4	20	19	17 3/4	33 1/16	37 3/4	36 1/8	14 1/4
I2	1	125	1/2"	38 3/4	36 1/8	28	26	6 3/8	20	19	22	33 1/16	37 3/4	36 1/8	14 1/4
	1	175		40 7/8	40 1/8	34	28	6 7/16	26	23	24 1/8	37 1/16	41 3/4	40 1/8	14 1/4
I3	1	200	1/2"	43 7/8	40 1/8	34	31	6 7/16	26	23	27 1/8	37 1/16	41 3/4	40 1/8	15 1/8
	1	225													
I4	2	225	1/2"	55 3/8	40 1/8	34	42	6 11/16	26	23	38 5/8	37 1/16	41 3/4	40 1/8	18 3/8
	1	250													
I5	1	300	1/2"	55 3/8	40 1/8	34	42	6 11/16	26	23	38 5/8	37 1/16	41 3/4	40 1/8	18 3/8
	1	350													
I6	1	400	1/2"	55 3/8	40 1/8	34	42	6 11/16	26	23	38 5/8	37 1/16	41 3/4	40 1/8	18 3/8
	2	350													
I7	2	400	1/2"	55 3/8	40 1/8	34	42	6 11/16	26	23	38 5/8	37 1/16	41 3/4	40 1/8	18 3/8
	3	350													
I8	3	350	1/2"	55 3/8	40 1/8	34	42	6 11/16	26	23	38 5/8	37 1/16	41 3/4	40 1/8	18 3/8
	3	400													

I-SERIES DIMENSIONAL DATA



Blower & Motor Cabinet	Dimensions, Inches													
	A	B	C	D	E	F	H	J	K	L	M	N	P	R
I1	32	36 1/8	48	21	4 5/8	28	48	18	20	6	9 1/8	9	32	28
I2	34 1/2	36 1/8	48	24	4 1/8	28	48	18	23	5 3/4	9 1/8	9	32	35
I3	38 3/4	36 1/8	54	28	4 3/8	28	50	20	27	5 7/8	8 1/8	8	56	35
I4	40 7/8	40 1/8	60	29	5 1/2	32	54	24	29	5 15/16	6 1/8	10	56	39
I5	43 7/8	40 1/8	60	32	5 1/2	32	58	28	32	5 15/16	4 1/8	8	76	43
I6	55 3/8	40 1/8	66	44	5	32	58	28	43	6 3/16	4 1/8	8	76	53

I-SERIES MODEL NUMBERS



Air Control

- O** = 100% OA (OA damper optional add)
- B** = 2-Position OA/RA (incl OA/RA dampers - need ___% OA & ___% RA and selector (ie: Occ/Unocc switch, time clock, etc))
- F** = Fixed OA/RA (incl OA damper only - RA damper optional add - need ___% OA & ___% RA)
- M** = Modulating OA/RA (incl OA/RA dampers - need ___% OA & ___% RA and optional selector (ie: bldg press sw, 0-10vDC or 4-20mA by others, etc))
- R** = 100% RA (RA damper optional add)
- V** = 100% OA Variable Volume with Supply Motor VFD (OA damper optional add)

Application-Matched System Content

AbsolutAire is committed to providing the *Best Available Value* in its I-Series indirect-fired heating and ventilating systems. This includes emphasizing durable construction and reliable operation in the range of standard features. It also includes offering a wide choice of optional features and accessories for meeting precise application requirements.

Standard Features

Mechanical	Electrical & Gas
<ul style="list-style-type: none"> • Indoor & Outdoor Designs • Durable Horizontal Cabinets • Choice of Discharge Configurations • Weather-Resistant, Heavy-Gauge Aluminized Steel Construction • Fan & Motor Vibration Isolation • Aluminized Steel Heat Exchanger & Burner • Combination Combustion Air/Exhaust Vent Cap • Durable Two-Coat Paint Finish (Owner-Matched Colors at No Extra Cost) • Fan Bearings rated to a Minimum of 100,000 Hours (L-10 Life) • 100% Factory Testing • Two-Year Parts & 90-Day Labor Limited Warranty 	<ul style="list-style-type: none"> • ETL-Certified Duct Furnace Section to UL 1995/CSA C22.2 No. 236 and UL 795 • Gas-Fired Duct Furnace CSA Design Certification to ANSI Z83.8-2006 for Use in U.S. & Canada • Maximum 80% Thermal Efficiency • Single-Stage Intermittent Pilot with Continuous Retry Control System (Natural Gas) • Easy Access to Burner & Gas Connections & Controls • High-Limit Safety Control • Adjustable Differential Air-Flow Proving Switch • Fan-Delay Timer • Factory Piped and Wired • Control Circuit Fusing • Non-Fused Disconnect Switch • Motor Starter and Overload Protection • Remote Control Panel (Meets NEMA 1, 2 and 5 Requirements) • Main Electrical Panel (Meets NEMA 1, 2, 3, 3R, 4, 5 and 12 Requirements) • Summer/Winter Switch

Optional Features & Accessories

Mechanical	Electrical & Gas
<ul style="list-style-type: none"> • Power Exhaust • Stainless Steel Heat Exchanger, Burner and/or Drip Pan • Exhaust Vent Extensions (Indoor Models) • Separated Combustion (Indoor Models) • Inlet Hood or Louvered Inlet Plenum • Insulated Cabinet (Not Including Duct Furnace Section) • Multiple Filtering Choices • Motorized Inlet or Discharge Dampers • Full or Duct Curb, Flat or Pitched • Vibration Isolation (Internal or External) • Motor Belt Guards • Service Platforms (OSHA Compliant) • Three- and Four-Way Discharge Diffusers • 100% OA, 100% RA, Fixed OA/RA or Modulating OA/RA • Cooling Options (Evaporative or DX/CW Coils) 	<ul style="list-style-type: none"> • Single-Stage Intermittent Pilot with Lockout Control (Propane Gas) • Two-Stage Mechanical & Electrical Modulation Controls (Natural or Propane Gas) • BMS-Compatible Gas Modulation Controls • Electronic Modulation • High and Low Gas-Pressure Switches & Gauges • Timed Freeze Protection • Supply Air Fire Stat • Manual-Reset High-Limit Switch • Control Relays • Single-Stage, Two-Stage or Electronic Modulating Gas-Control Thermostats • Smoke Detectors (Installed or Shipped Loose) • LX1 DDC Controls or Remote-Control Smart Stats • Fused Disconnect Switch

Other *Pure and Simple* Solutions:

- ▲ E-Series Direct-Fired Air Turnover
- ▲ V-Series Direct-Fired Make-Up Air Value
- ▲ AA-Series Direct-Fired Heating & Ventilating
- ▲ R-Series Direct-Fired Heating & Ventilating
- ▲ S-Series Air-Handling Systems
- ▲ Spray & Bake Paint-Booth Heating Systems
- ▲ CH, DH & APD Heaters & Air-Process Dryers
- ▲ M-Series Make-Up Air Fan Boxes
- ▲ Coil & Evaporative Cooling Systems
- ▲ LX1 Direct Digital Control (DDC) System



Represented by:



5496 North Riverview Drive • Kalamazoo, MI 49004
Phone: (800) 804-4000 • Fax: (269) 382-5291

www.absolutaire.com